

The Changing Nature of Work

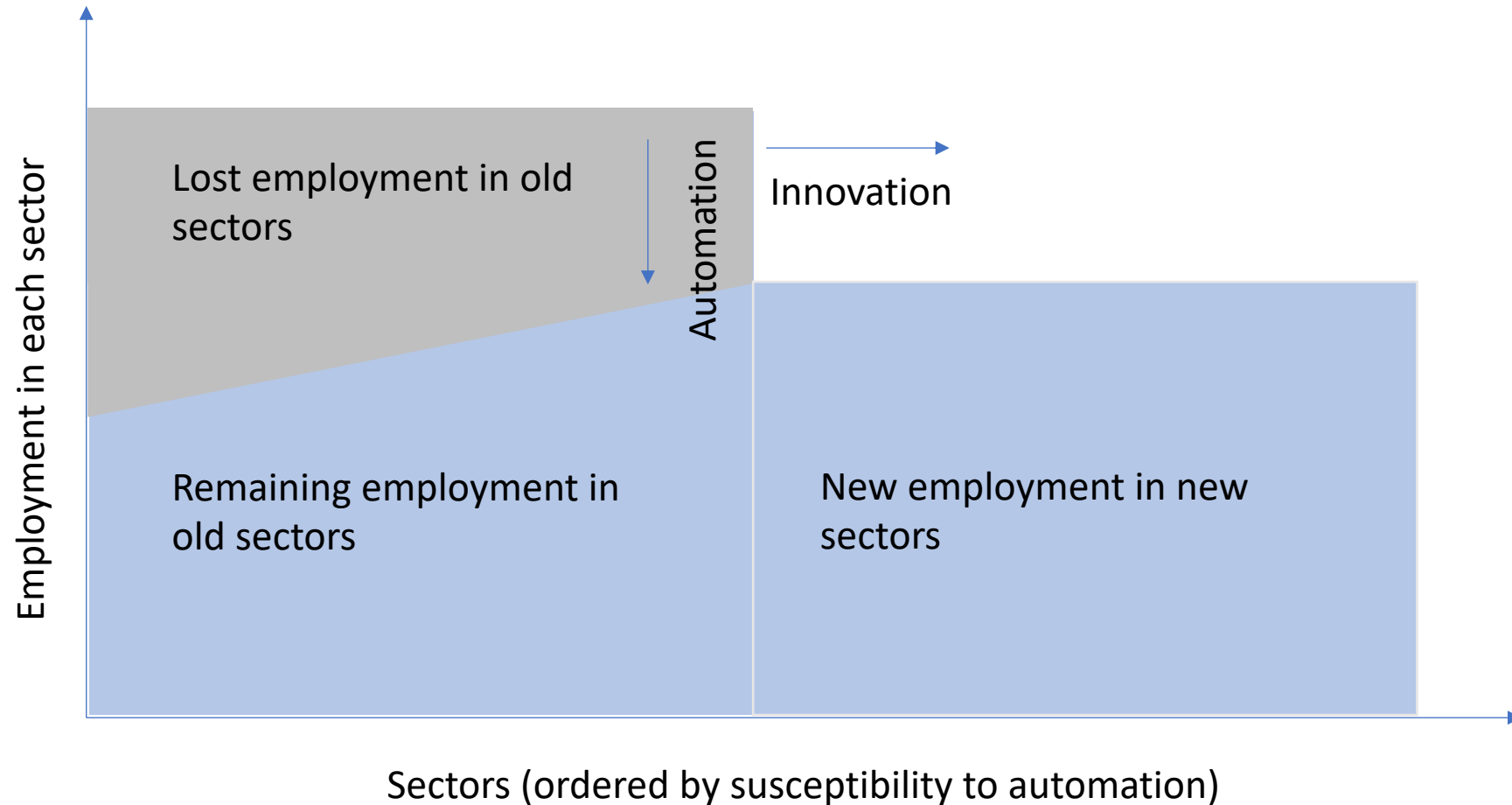
Federica Saliola
World Bank

Artificial intelligence and the next generation of competences :
How Digital – and Artificial Intelligence will impact jobs and competences profiles?

The World Conference on Intellectual Capital for Communities

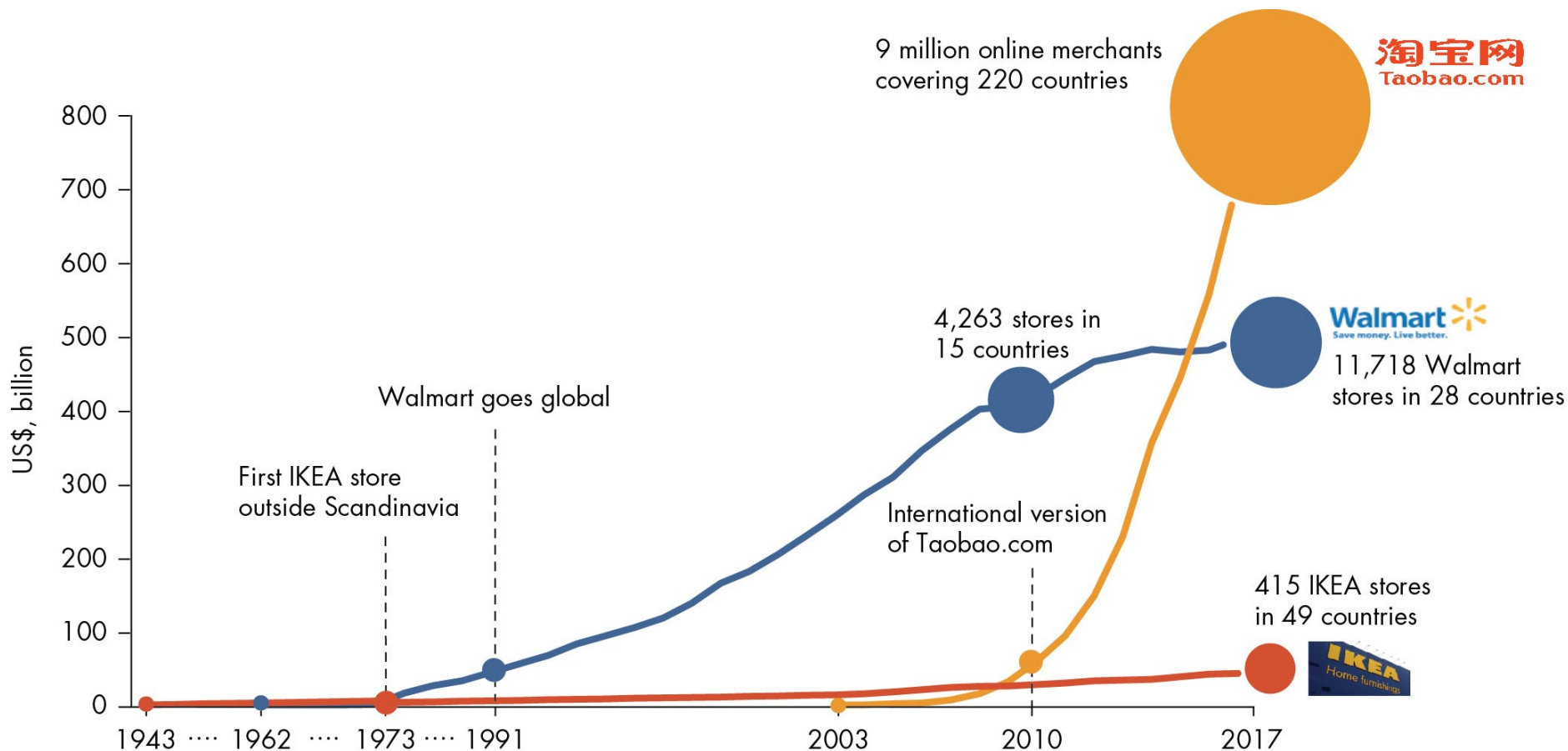
UNESCO, 11 & 12 July 2019

Technological Progress Can Expand Job Opportunities



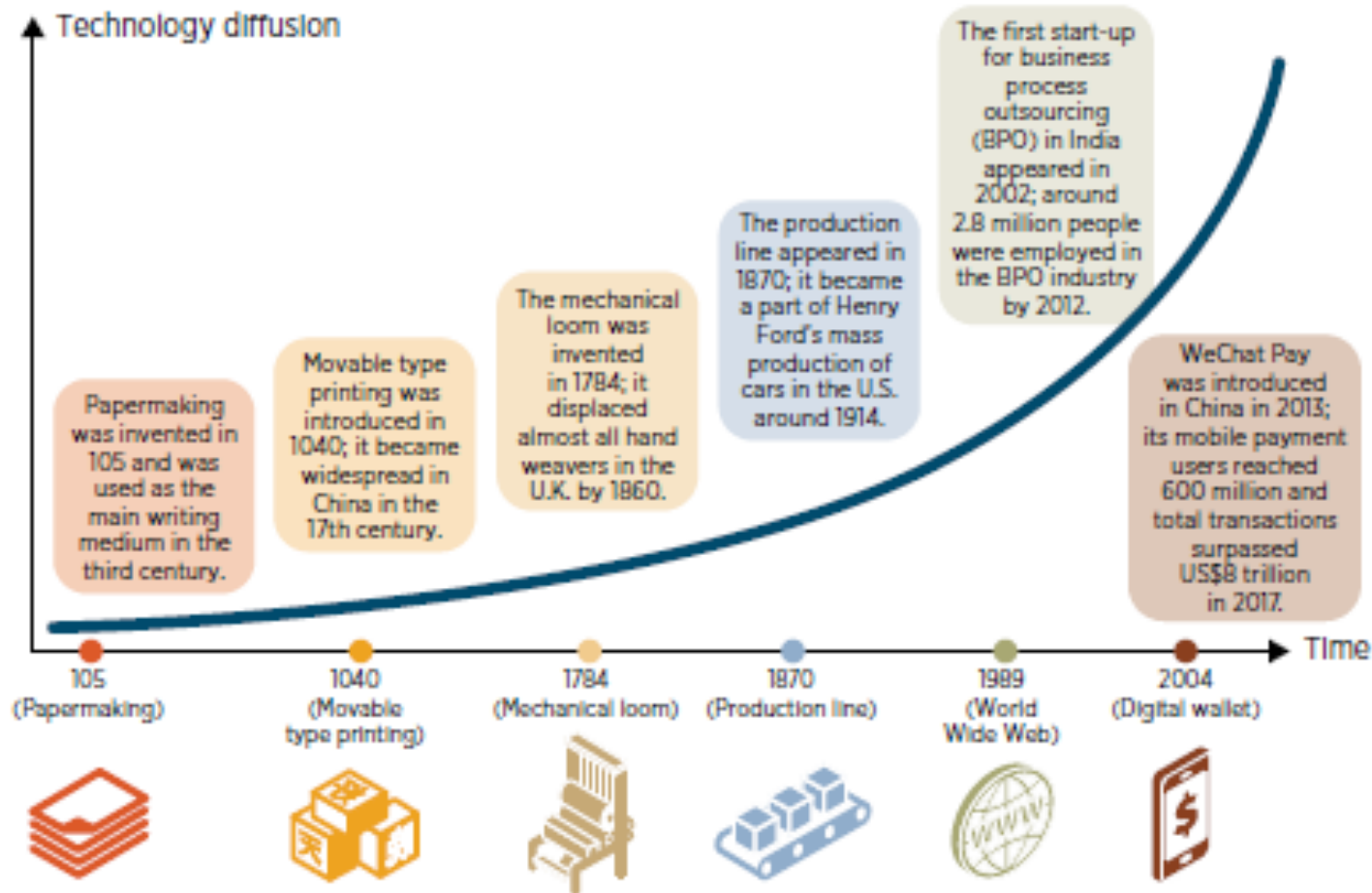
Source: Authors' analyses.

Recent Technological Advances Accelerate Firm Growth



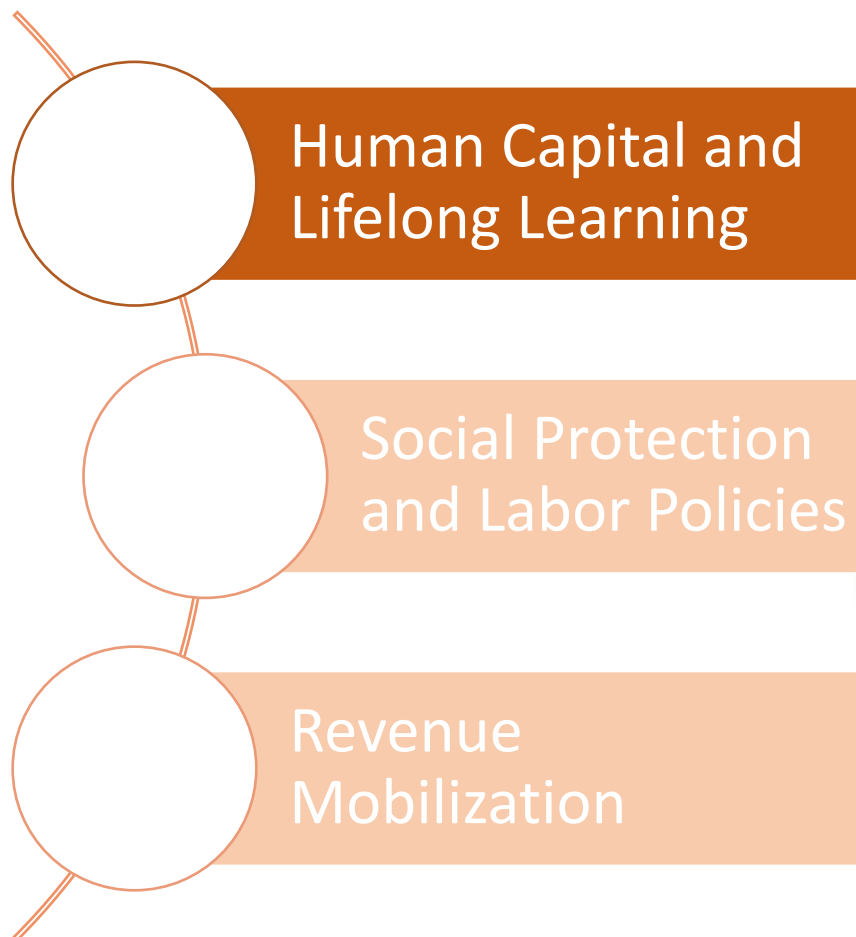
Source: Authors' analyses based on Walmart Annual Reports, Statista.com, NetEase.com

Advances in Technology Call for New Skills seemingly overnight: “Adaptability” is Increasingly in Demand



Source: Authors' analyses.

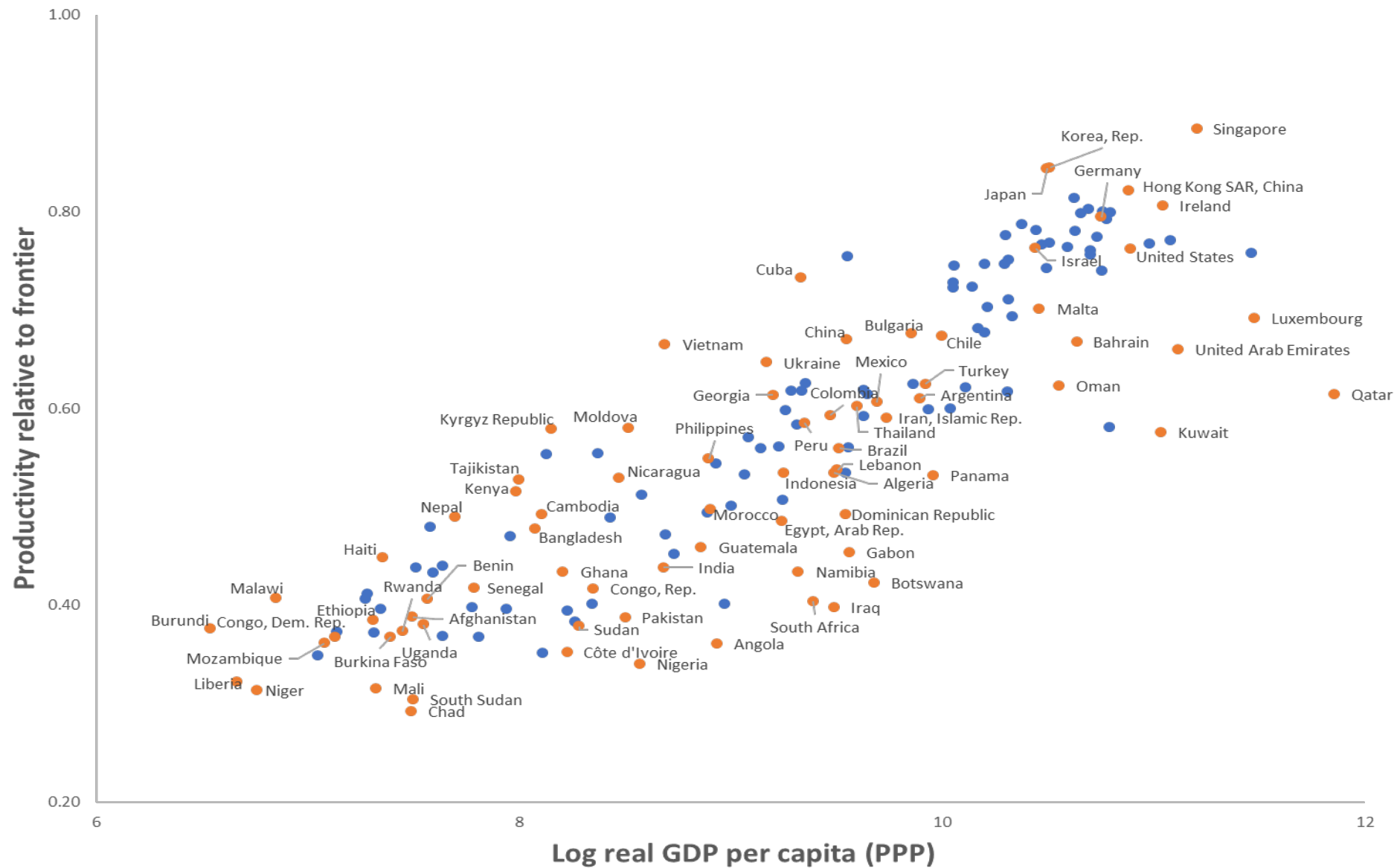
Three Areas For Policy Action:



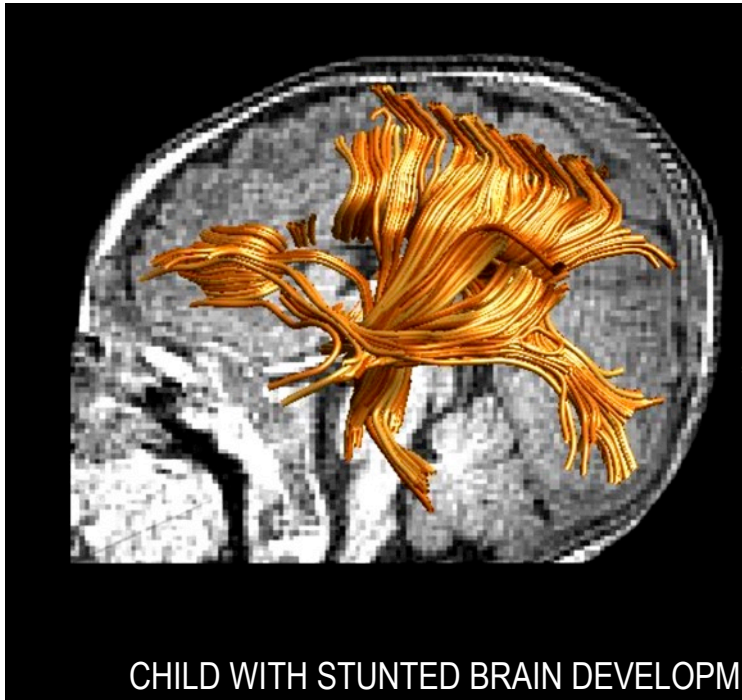


Intellectual Capital
for Communities
In the Knowledge
Economy

The Human Capital Index 2018

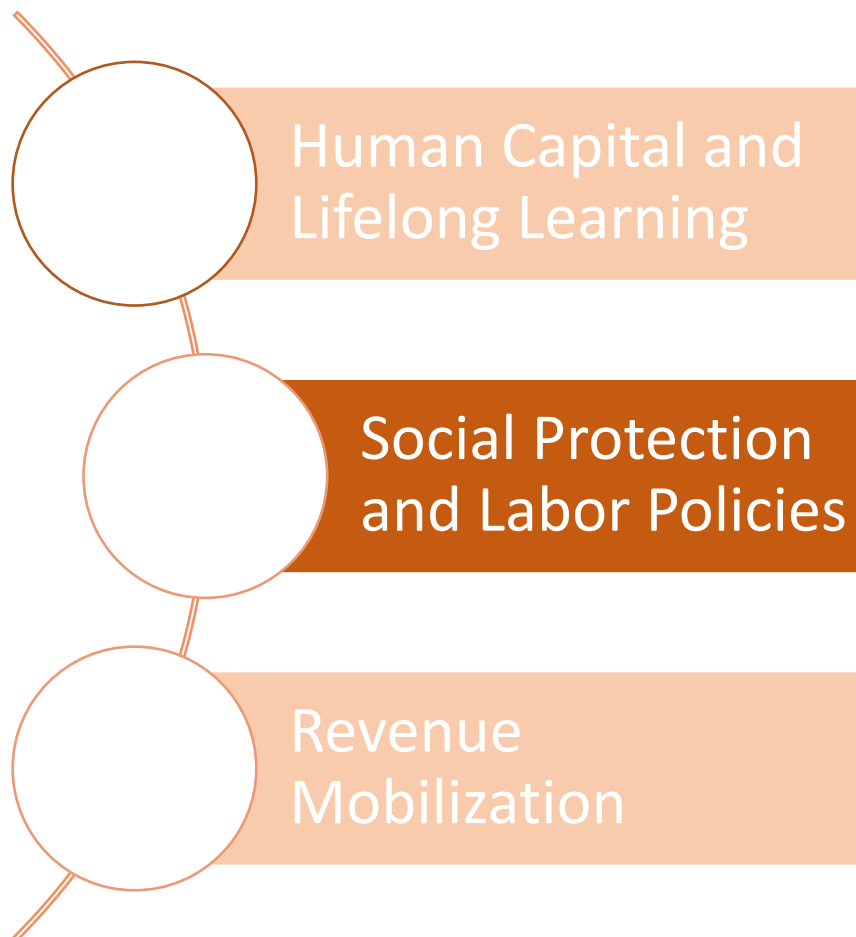


The First 1,000 Days Lay A Lifelong Foundation



Source: Authors' analyses.

Three Areas For Policy Action:



Convergence in the nature of work? Persistent informality and more fluid labor markets

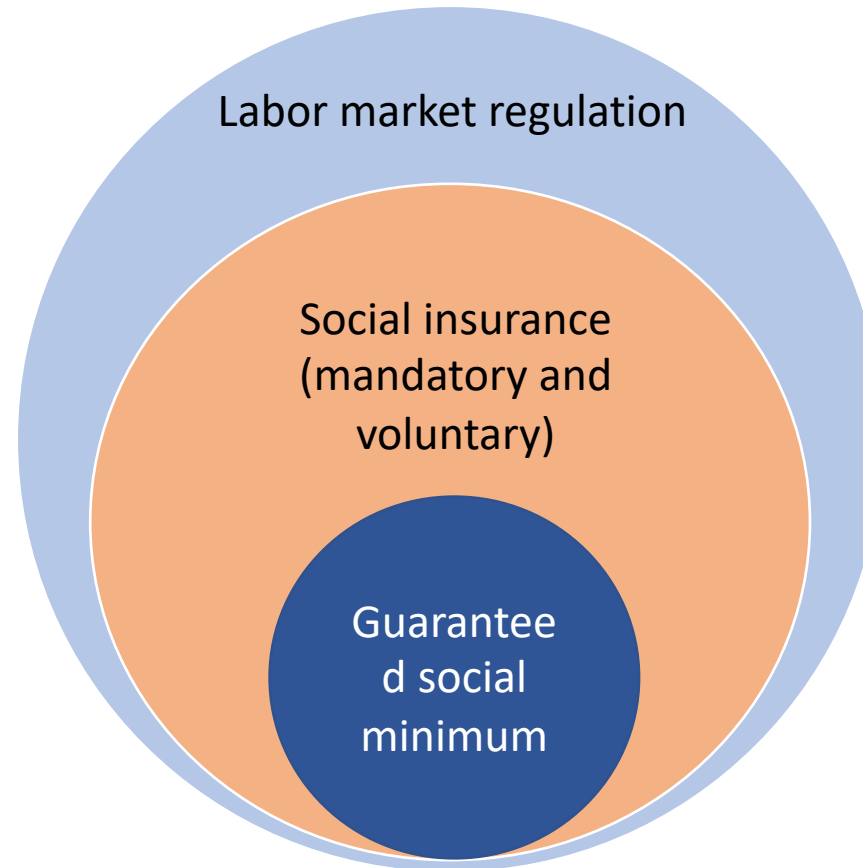
More than 65%
average
informality in
emerging
economies





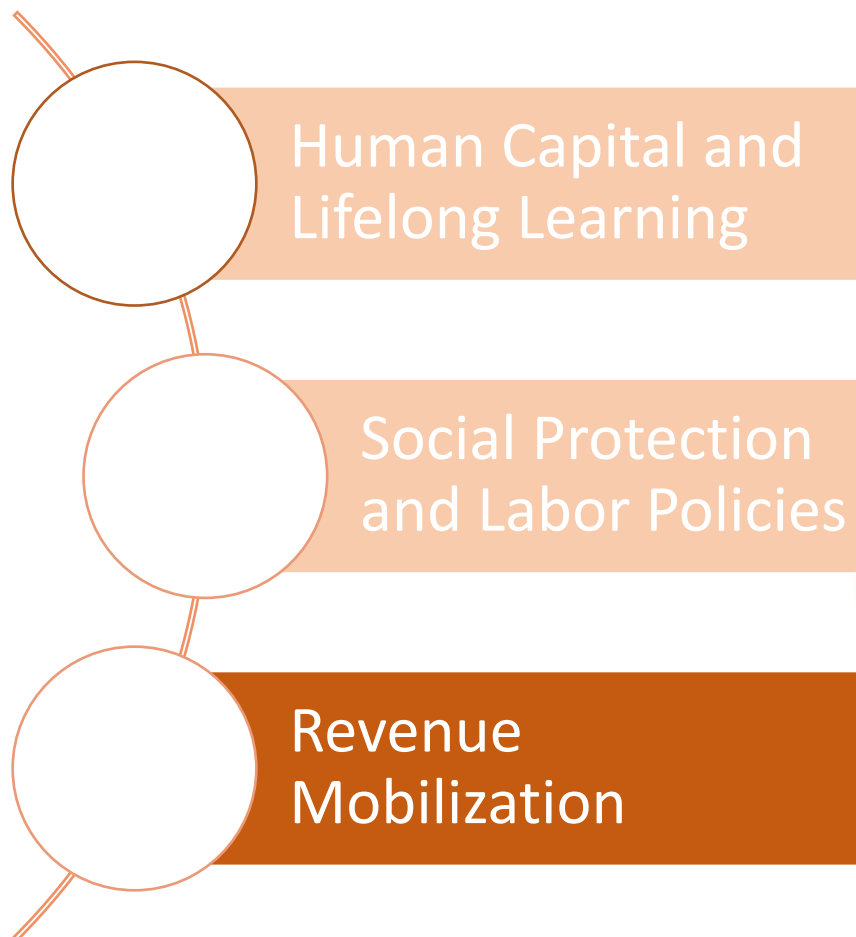
Intellectual Capital
for Communities
In the Knowledge
Economy

**** Rethinking Social Protection: Protect People, Not Jobs**

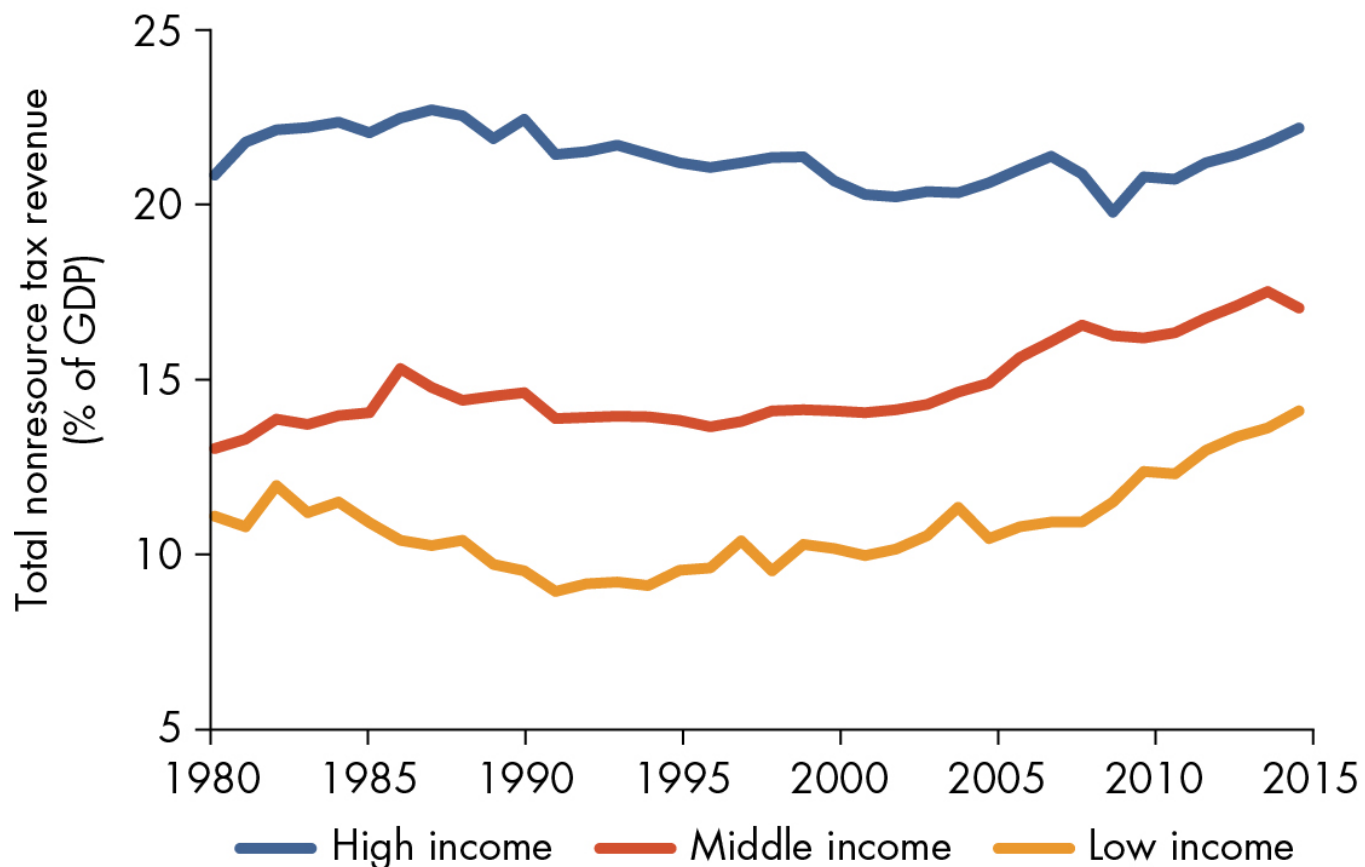


Source: Authors' analysis.

Three Areas For Policy Action:



Tax Revenues Have to Rise, Especially in Developing Economies



Source: Authors' analysis based on International Centre for Tax and Development (ICTD) and UNU-WIDER Government Revenue Dataset 2017.

2019 World Development Report



<http://www.worldbank.org/en/publication/wdr2019>